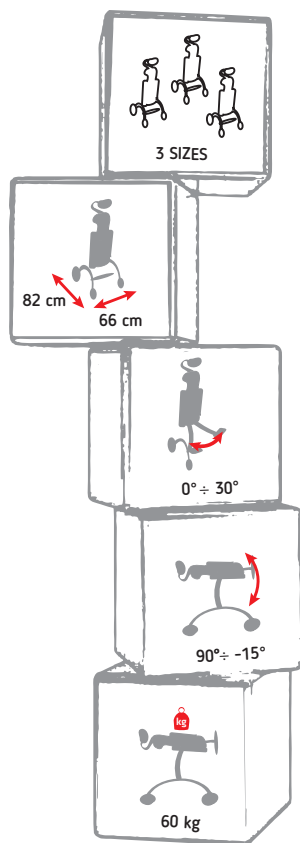


# Coco

# STANDER





The COCO Stander offers prone, upright and supine standing position together with hip abduction.

The standard version consists of: standing frame with prone, upright and supine position, hip abduction system ( $0^{\circ} \div 30^{\circ}$  for each leg separately), wheels with brakes, main trunk support, trunk support, hip supports, back support, strap for trunk support, knee supports and feet platforms 3D with straps.

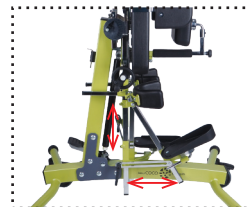
Available accessories: Headrest, headrest mounting set for prone position, extra chest support (110 mm height) - maximum two extra chest supports available for the device (max 220 mm of height enlargement), side supports, extra strap for trunk support, knee joint flexion and tray (available for prone and supine position).



The COCO Stander offers prone, upright and supine standing position together with hip abduction. The stander allows you to set hip abduction in each leg separately ( $0^{\circ} \div 30^{\circ}$ ). The device is recommended for children at risk of hip displacement.



The stander offers prone, upright and supine standing position with tilt adjustment ( $90^{\circ} \div -15^{\circ}$ ).



Knee joint flexion - system allows to set the desired angle of flexion in the knee joint. Recommended for patients with knee contractures.



The wide range of adjustability offered by the trunk supports, hip support, back support and straps for trunk support provides physiotherapists with the tools to position a large range of children in the same stander.



Feet platforms 3D - an independent system for each foot, allows you to set any corrective positions of the left and right foot. It is possible to set the foot in the dorsal and sub-flexion as well as the possibility of supination and pronation.



Tray - large surface of the tray allows for comfortable mealtimes and playtimes. Available in prone, upright and supine position.

## TECHNICAL DATA

Base width/length

SIZE 1

66/82 cm

SIZE 2

66/82 cm

SIZE 3

66/82 cm

Main trunk support

30×28 cm

38×32,5 cm

43,5×38 cm

Trunk support

17×11 cm

22×11 cm

27×11 cm

Pivot angle range

$90^{\circ} \div -15^{\circ}$

$90^{\circ} \div -15^{\circ}$

$90^{\circ} \div -15^{\circ}$

Maximum user's weight

60 kg

60 kg

60 kg